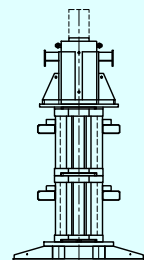
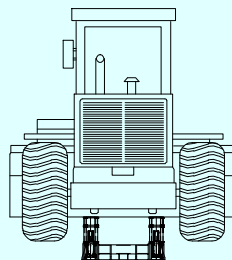
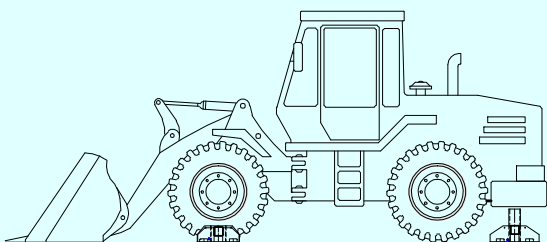


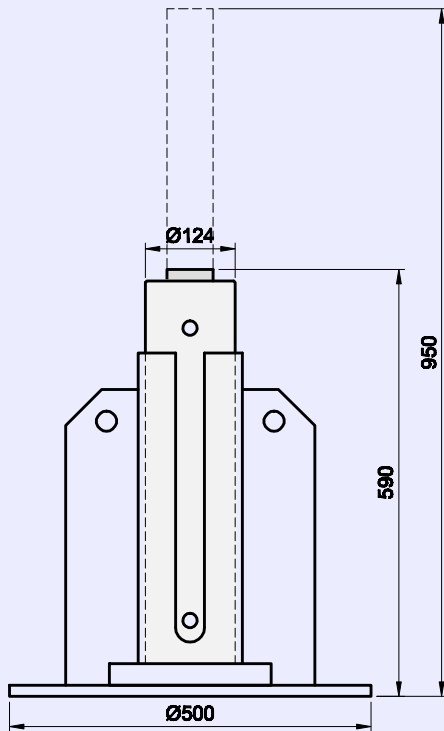
# AFKOS INDUSTRIES

## COMPLETE HYDRAULIC JACKING SYSTEMS AND PRODUCTS TO HIRE

JANUARY 2013



Scale 1:10



*Double Acting Jack  
with Support Base*

**32 Tonne Stroke 360mm**

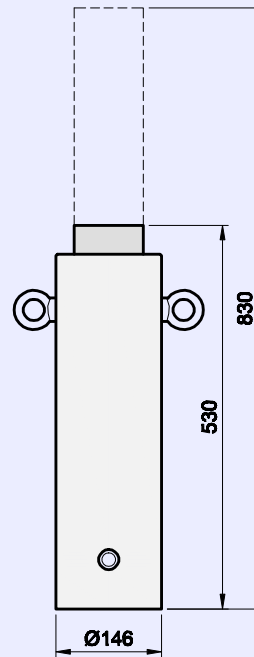
Max Operating Pressure **10000** psi

Double Acting Hydraulic Return

Available Quantity 10

Part No AMH 32-360

Scale 1:10



*Single Acting Jack*

**50 Tonne Stroke 300mm**

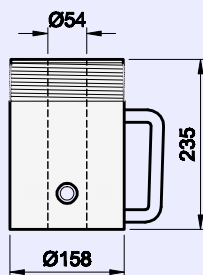
Max Operating Pressure **10000** psi

Single Acting Load Return

Available Quantity 4

Part No AMH 50-300

Scale 1:10



*Centre Hole Jack*

*Single Acting Spring Return*

**60 Tonne Stroke 80mm**

Centre Hole Jack

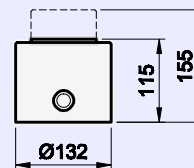
Max Operating Pressure **10000** psi

Spring Return

Available Quantity 1

Part No AMH 60-80

Scale 1:10



*Pan Cake Jack*

*Single Acting Load Return*

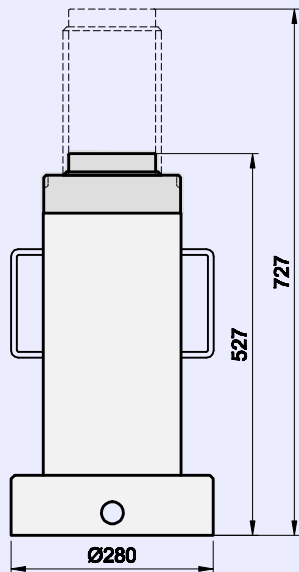
**50 Tonne Stroke 40mm**

Max Operating Pressure **10000** psi

Single Acting Load Return

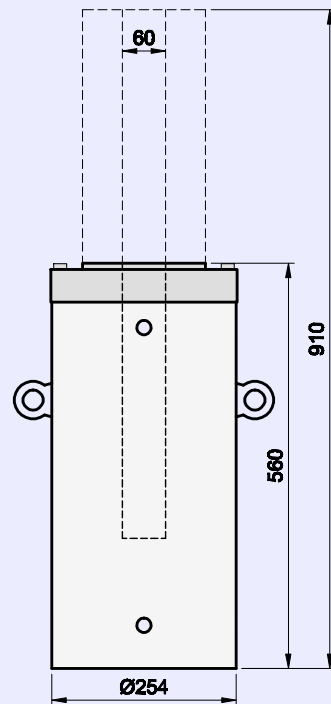
Available Quantity 8

Part No AMH 50-40

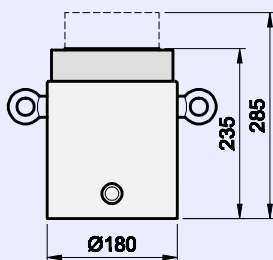
*Locking Collar Jack***98 Tonne Stroke 200mm**Max Operating Pressure **10000** psi

Single Acting Load Return

Load Holding Locking Collar

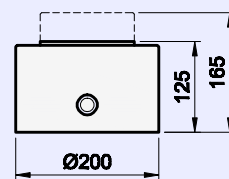
Available Quantity **8**Part No **AMH 98-200***Double Acting Jack***100 Tonne Stroke 350mm**Max Operating Pressure **4000** psi

Double Acting Hydraulic Return

Available Quantity **4**Part No **AMH 100-350***Locking Collar Jack***100 Tonne Stroke 50mm**Max Operating Pressure **10000** psi

Single Acting Load Return

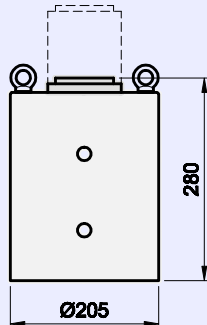
Load Holding Locking Collar

Available Quantity **5**Part No **AMH 100-50***Pan Cake Jack  
Single Acting Load Return***100 Tonne Stroke 40mm**Max Operating Pressure **10000** psi

Single Acting Load Return

Available Quantity **8**Part No **AMH 100-40**

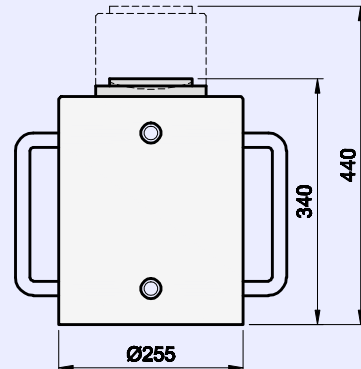
Scale 1:10

*Double Acting Jack***100 Tonne Stroke 100mm**Max Operating Pressure **5000** psi

Double Acting Hydraulic Return

Available Quantity **3**Part No **AMH 100-100**

Scale 1:10

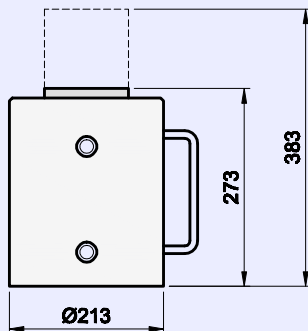
*Double Acting Jack***110 Tonne Stroke 100mm**Max Operating Pressure **4500** psi

Double Acting Hydraulic Return

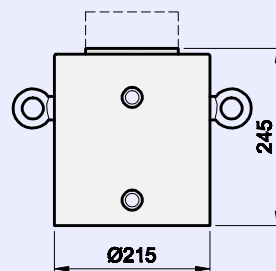
Swivel Load Cap

Available Quantity **1**Part No **AMH 110-100**

Scale 1:10

*Double Acting Jack***150 Tonne Stroke 100mm**Max Operating Pressure **10000** psi

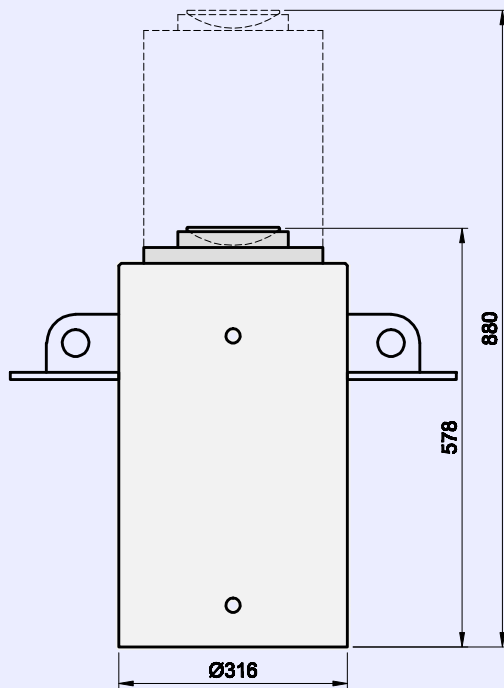
Double Acting Hydraulic Return

Available Quantity **8**Part No **AMH 150-100***Double Acting Jack***150 Tonne Stroke 50mm**Max Operating Pressure **10000** psi

Double Acting Hydraulic Return

Available Quantity **1**Part No **AMH 150-50**

Scale 1:10

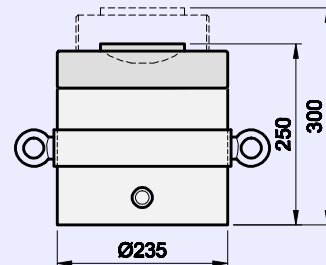
*Double Acting Jack***200 Tonne Stroke 300mm**Max Operating Pressure **4500** psi

Double Acting Hydraulic Return

Swivel Load Cap

Available Quantity **1**Part No **AMH 200-300**

Scale 1:10

*Locking Collar  
Single Acting Jack***200 Tonne Stroke 50mm**Max Operating Pressure **10000** psi

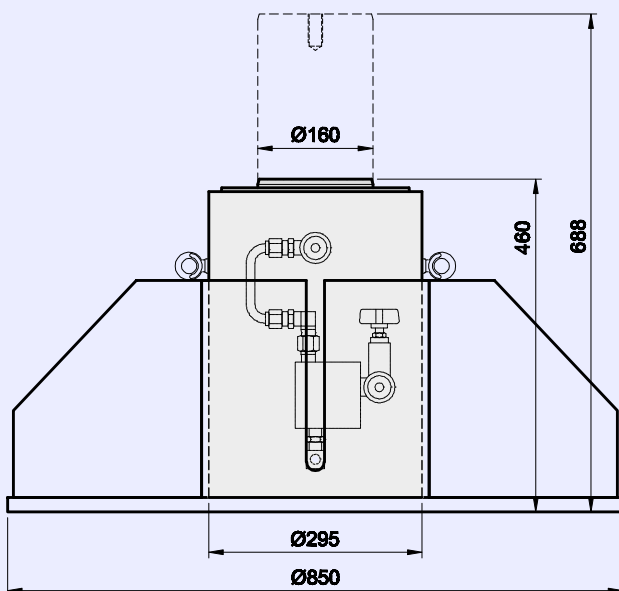
Single Acting Load Return

Load Holding Locking Collar

Swivel Load Cap

Available Quantity **8**Part No **AMH 200-50**

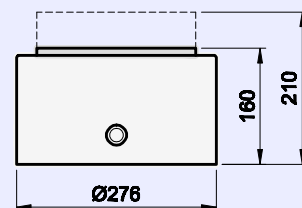
Scale 1:10

*Double Acting Jack  
with Support Base***220 Tonne Stroke 228mm**Max Operating Pressure **10000** psi

Double Acting Hydraulic Return

Available Quantity **4**Part No **AMH 220-228**

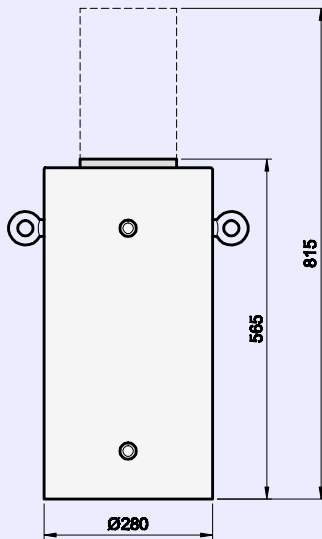
Scale 1:10

*Pan Cake Jack  
Single Acting Load Return***255 Tonne Stroke 50mm**Max Operating Pressure **10000** psi

Single Acting Load Return

Available Quantity **4**Part No **AMH 255-50**

Sub 112

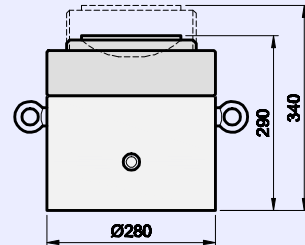
*Double Acting Jack***270 Tonne Stroke 250mm****Max Operating Pressure 10000 psi**

Double Acting Hydraulic Return

Available Quantity 1

Part No AMH 270-250

Sub 112

*Locking Collar  
Single Acting Jack***280 Tonne Stroke 50mm****Max Operating Pressure 10000 psi**

Single Acting Load Return

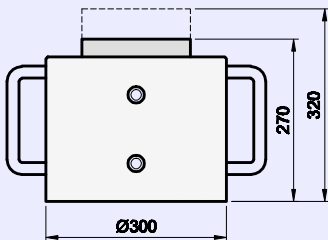
Load Holding Locking Collar

Swivel Load Cap

Available Quantity 8

Part No AMH 280-50

Sub 112

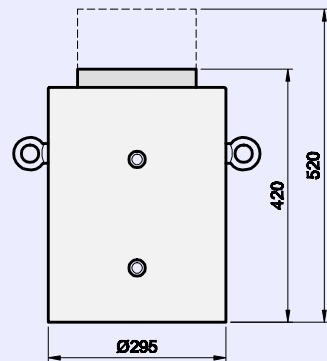
*Double Acting Jack***300 Tonne Stroke 50mm****Max Operating Pressure 10000 psi**

Double Acting Hydraulic Return

Available Quantity 3

Part No AMH 300-50

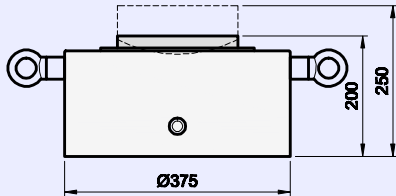
Sub 112

*Double Acting Jack***305 Tonne Stroke 100mm****Max Operating Pressure 10000 psi**

Double Acting Hydraulic Return

Available Quantity 2

Part No AMH 305-100



*Pan Cake Jack*  
*Single Acting Load Return*

**350 Tonne Stroke 50mm**

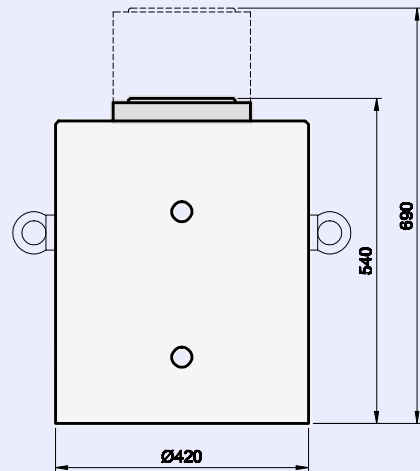
Max Operating Pressure **10000 psi**

Single Acting Load Return

Swivel Load Cap

Available Quantity **7**

Part No **AMH 350-50**



*Double Acting Jack*

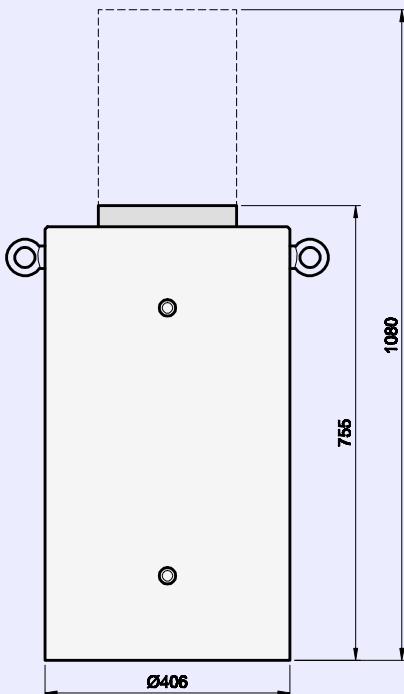
**500 Tonne Stroke 150mm**

Max Operating Pressure **10000 psi**

Double Acting Hydraulic Return

Available Quantity **1**

Part No **AMH 500-150**



*Double Acting Jack*

**500 Tonne Stroke 325mm**

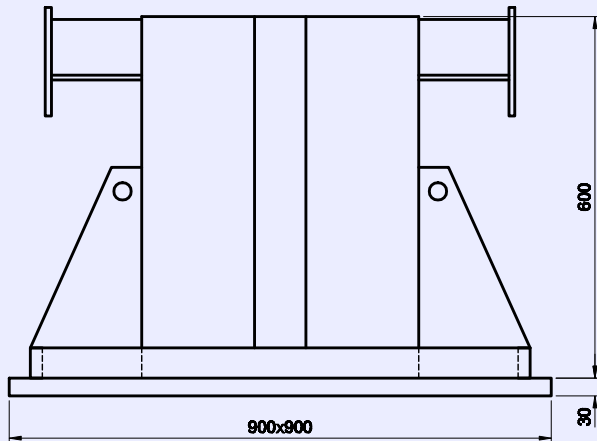
Max Operating Pressure **10000 psi**

Double Acting Hydraulic Return

Available Quantity **4**

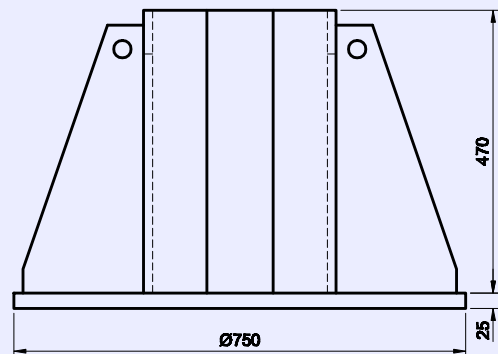
Part No **AMH 500-325**

**Grade 10**



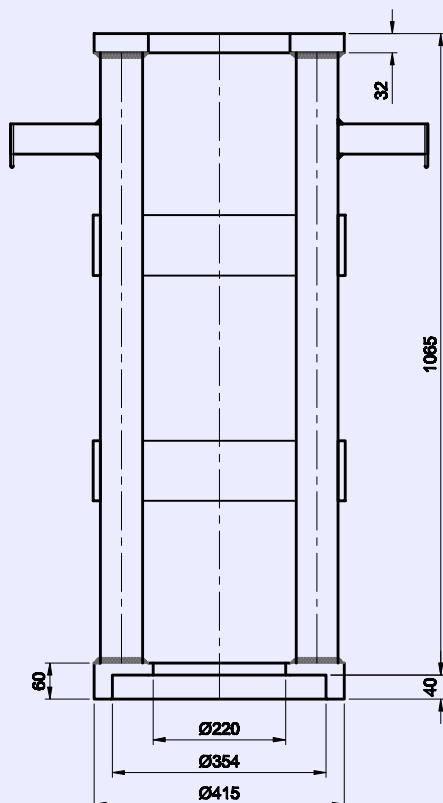
**Jack Support Base**  
500 Tonne  
Available Quantity 4

**Quesada 1992**

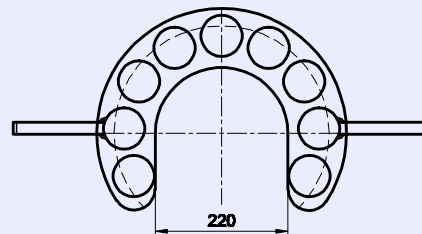


**Jack Support Base**  
**270 Tonne**  
**Available Quantity 2**

**Scale 1:12**

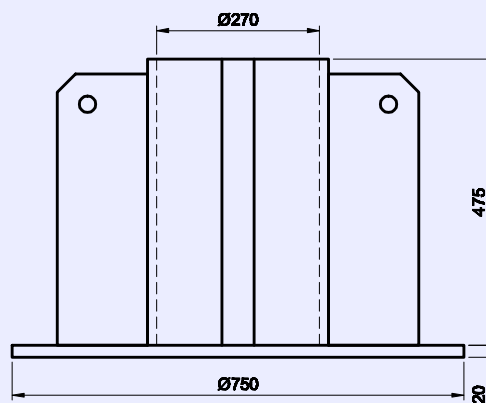


**C-Packer**  
**43 Tonne**  
**Available Quantity 2**

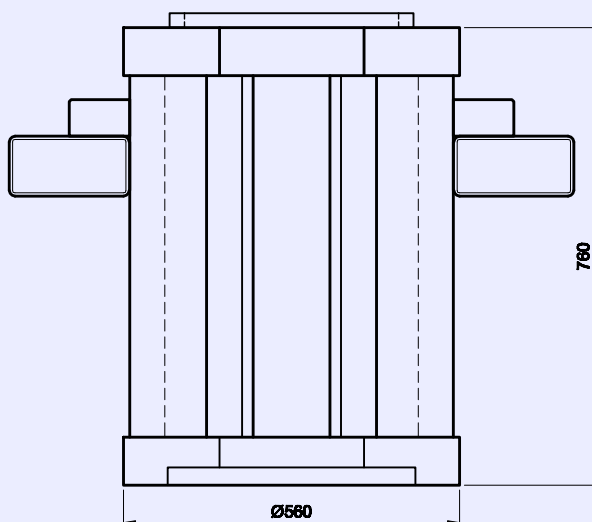




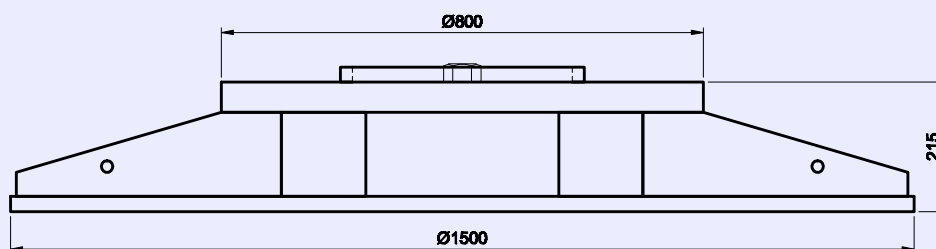
Scale 1:25

*Support Base*

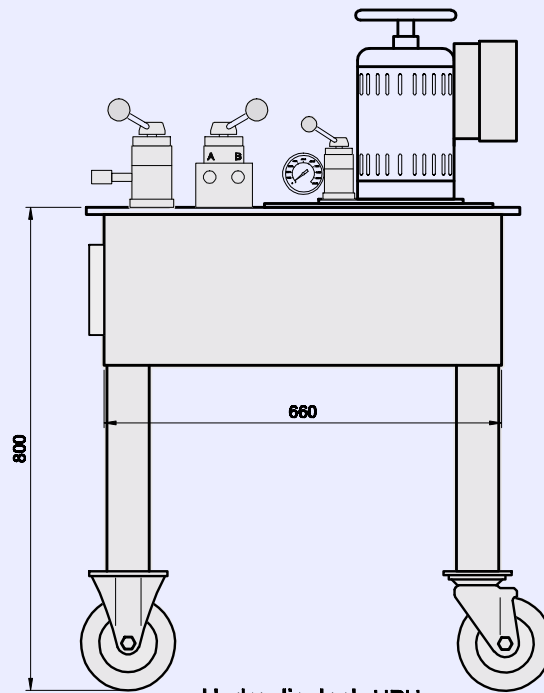
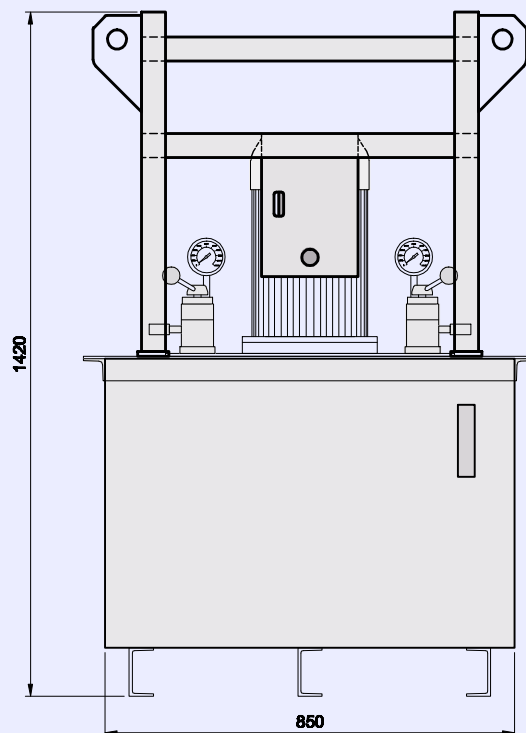
**Jack Support Base**  
**500 Tonne**  
**Available Quantity 2**

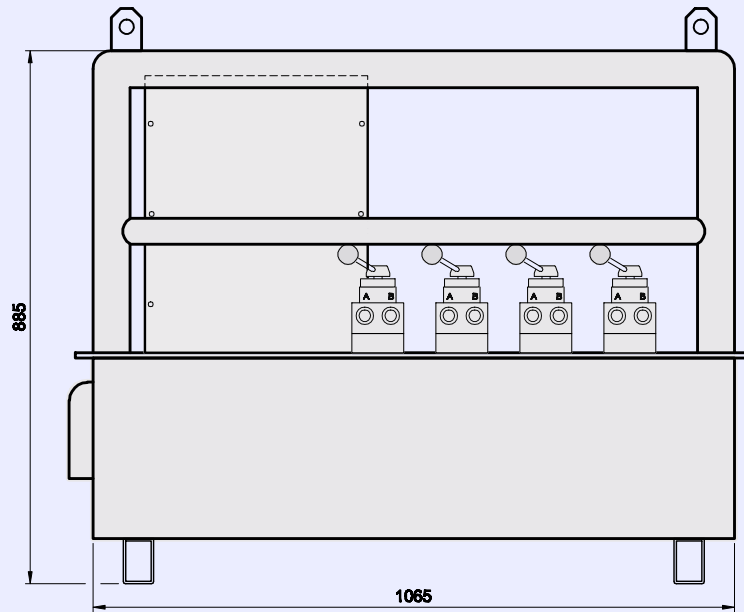
*Stackable Packer*

**C-Packer and Support Base**  
**500 Tonne**  
**Available Quantity 4**

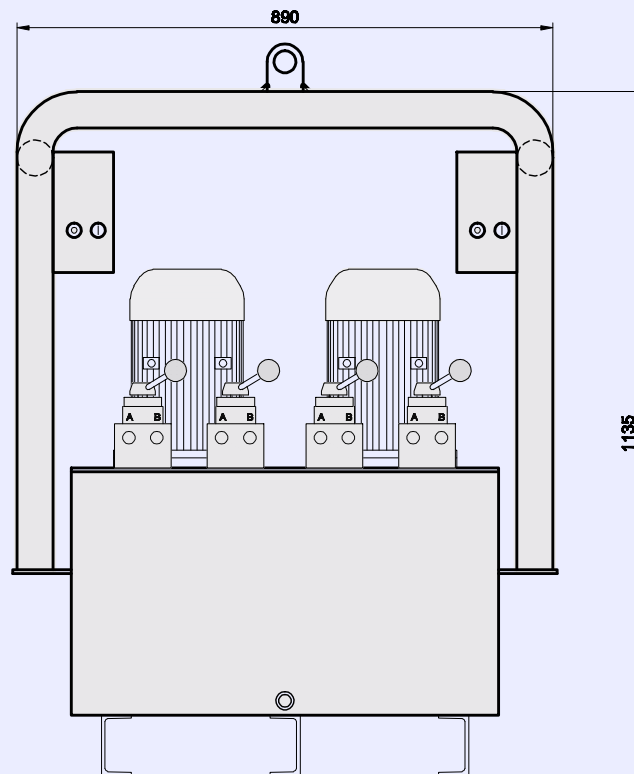
*Wide Base Jack Support*

**Load Support Base Available**  
**500 Tonne**  
**Available Quantity 1**

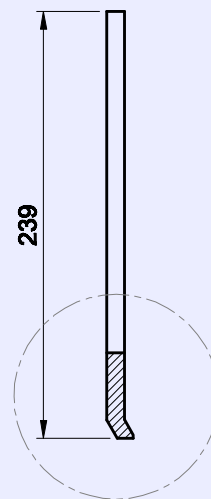
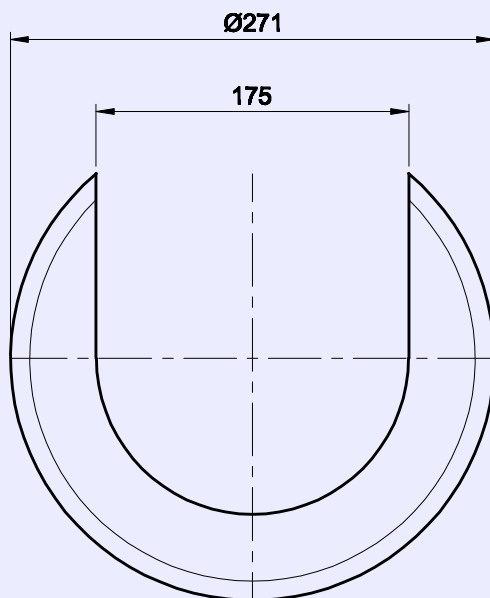
**Hydraulic Jack HPU****Relief PSI 10000****Part No. PE 464-50-220 (single phase)****Reservoir Capacity 55 L****Main Control Valve 1 @ 9506****Operational Control Valve 3 @ 9501 1 @ 9507****Quantity 1****Hydraulic Jack HPU****Relief PSI 10000****Model PT 14\* 480M****Power 7.5kw (3 phase)****Reservoir Capacity 350L****Operational Control Valve 4 @ 9506****Quantity 1**



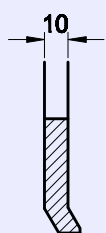
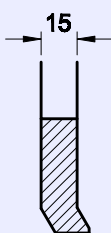
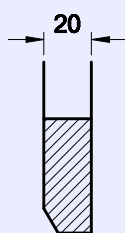
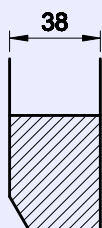
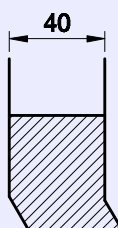
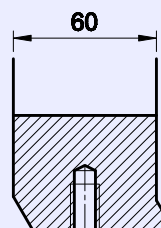
**Hydraulic Jack HPU**  
 Relief PSI 10000  
 Part No. AR-PQ603-50-220 (3 phase)  
 Model C-230 volt  
 Serial No. 50760  
 Reservoir Capacity 220L  
 Main Control Valve 1 @ 9577  
 Operational Control Valve 4 @ 9507  
 Quantity 1

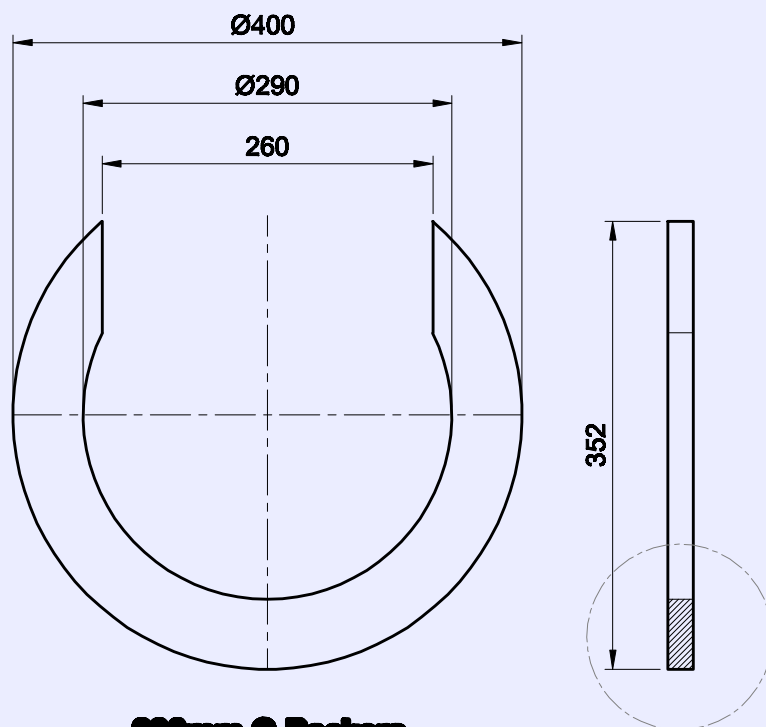
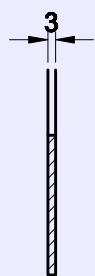
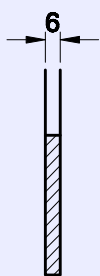
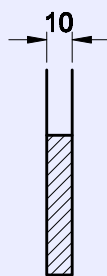
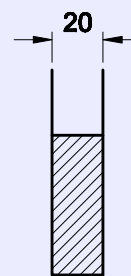


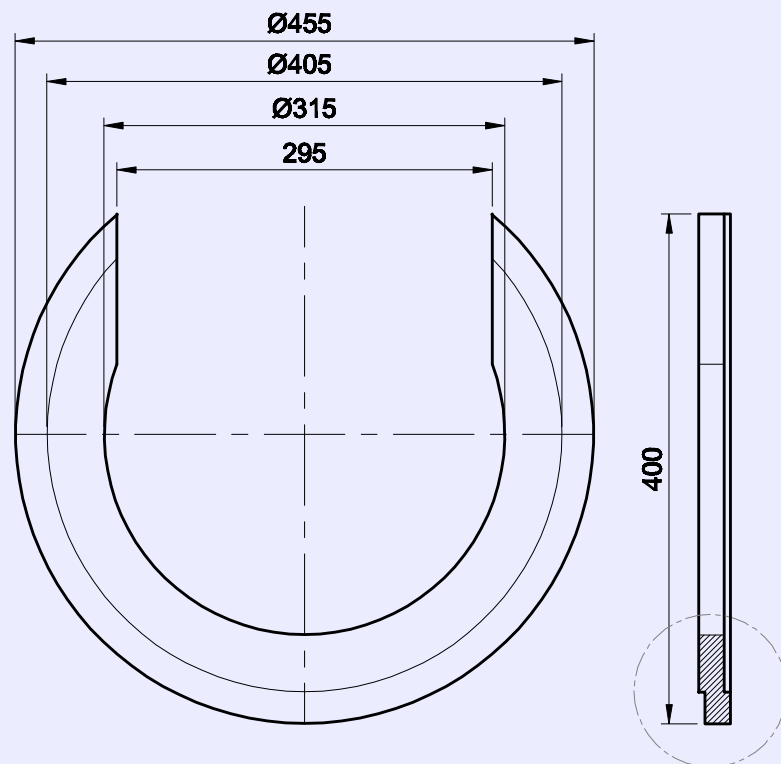
**Hydraulic Jack HPU**  
 Relief PSI 10000  
 Power 3 phase  
 Reservoir Capacity 140L  
 Quantity 1

**180mm C-Packers**

Cross section and quantity of c-packers with the same diameter

**4 pieces****1 piece****4 pieces****7 pieces****13 pieces****7 pieces****8 pieces**

**200mm C-Packers****Cross section and quantity of c-packers with the same diameter****7 pieces****4 pieces****4 pieces****4 pieces**

**315mm C-Packers****Cross section and quantity of o-packers with the same diameter**